



NITech

NAGOYA INSTITUTE OF TECHNOLOGY
NATIONAL UNIVERSITY

A QUICK GUIDE FOR INTERNATIONAL STUDENTS



EMPLOYMENT SITUATION (2018)

(1) Employment Rate

		Number of Job Applicants	Ratio of Job Openings to Job Applicants	Number of Newly Employed Graduates	Employment Rate
Faculty of Engineering	Undergraduate Course	243	21.0	239	98.4%
Graduate School of Engineering	Master Course	687	4.6	682	99.3%
	Doctor Course	23		23	100.0%

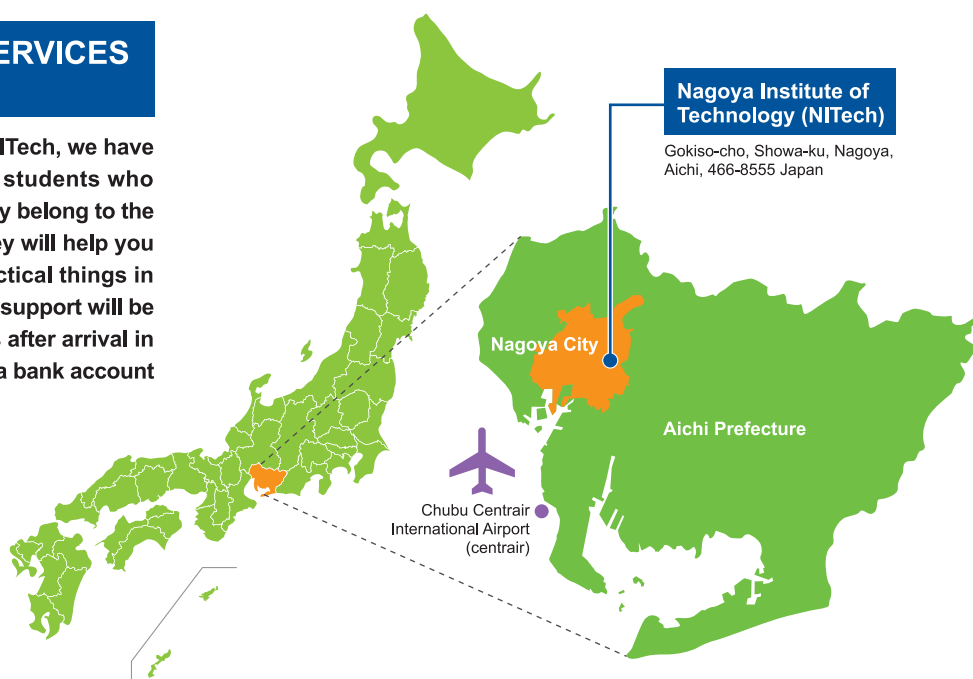
Note: Including number of incumbents (1 evening course student, 12 master course students and 10 doctor course students)

(2) Main place of employment

Place Of Employment	From		Total
	Undergraduate Course	Postgraduate Course	
DENSO CORPORATION	2	47	49
TOYOTA MOTOR CORPORATION	7	18	25
Aisin Seiki Co., Ltd.	1	17	18
CHUBU Electric Power Co., Inc.	2	15	17
TOYOTA INDUSTRIES CORPORATION		17	17
TOYOTA BOSHOKU CORPORATION	4	11	15
TOYOTA AUTO BODY CO., LTD.	5	9	14
Mitsubishi Electric Corporation		13	13
Mitsubishi Electric Mechatronics Software Corporation	2	11	13
Panasonic Corporation		12	12
AISIN AW CO., LTD.	3	7	10
TOKAI RIKA CO., LTD.	1	9	10
BROTHER INDUSTRIES, LTD.		10	10
Murata Manufacturing Co., Ltd.	1	9	10
Makita Corporation	1	8	9
Yamaha Motor Co., Ltd.	1	8	9
Rinnai Corporation	1	8	9
ADVICS CO., LTD.	1	7	8
TOYODA GOSEI Co., Ltd.	2	6	8
TOYOTA SYSTEMS	3	5	8

STUDENT SUPPORT AND SERVICES (TUTOR SYSTEM)

In order to help you get a smooth start at NITech, we have a personal tutor system for International students who have just started life in Japan. Tutors usually belong to the same department or laboratory as you. They will help you not only in the studies but also in any practical things in daily life which puzzle you. Especially, their support will be essential for you during the first few weeks after arrival in order to register in the ward office, to open a bank account and to learn where to shop, etc.





THE NEXT GLOBAL STAGE

NITech will pursue its mission of contributing to strengthening the international competitiveness of industry while respecting tradition.

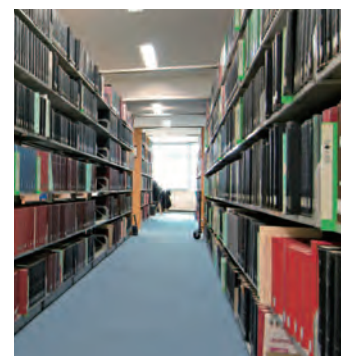
Undergraduate Course, Graduate Course

Faculty of Engineering (Day courses)・
Graduate School of Engineering

- Life Science and Applied Chemistry
- Physical Science and Engineering
- Electrical and Mechanical Engineering
- Computer Science
- Architecture, Civil Engineering and Industrial Management Engineering
- Nagoya Institute of Technology and University of Wollongong Joint Degree Doctoral Program in Informatics
- Nanopharmaceutical Sciences

Faculty of Engineering (Evening courses)

- Materials Engineering
- Mechanical Engineering
- Electrical and Computer Engineering
- Civil and Environmental Engineering

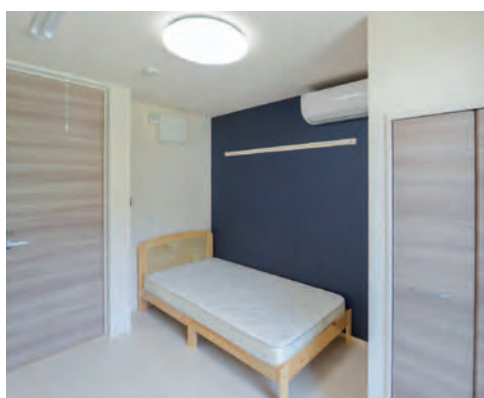


NITech Cosmo Village

NITech Cosmo Village is a dormitory for international and Japanese students, including female students.

Eight international and Japanese students live together in one unit.

NITech Cosmo Village is on the south of the university campus, just across the road.



One unit consists of eight private rooms and a shared section (LDK, shower room (2), restroom (2), wash basin (2), washing machine (2)). International and Japanese students will live together in the same unit.

- Accommodation fee: ¥ 30,000 per month (Utility charge will be charged separately).
- Security Deposit: ¥ 15,000 (It's only charged when moving in and not be returned).

FEES AND FINANCIAL SUPPORT

FEES

	Application Fee (JPY)	Admission Fee (JPY)	Tuition Fee/ year (JPY)
Undergraduate Course	17,000	282,000	535,800
Postgraduate Course	30,000	282,000	535,800
Student Exchange Program	9,800	84,600	356,400

The fees are exempted for students who obtain a Japanese Government Scholarship, or if students are from universities/institutes with an academic exchange agreement and tuition exemption agreement with NITech. For more details, please contact NITech International Students Affairs Office.

TUITION FEE EXEMPTION

If you are facing financial difficulties (including family income) your tuition fee can be exempted in full or half amount under the condition that you are a regular student of NITech and that your academic record is excellent. For more details, please contact NITech International Students Affairs Office.

Contact Us

International Student Affairs

HOW TO APPLY (The information in the below table is subject to change)

Course & Program (*1)		Goal	Duration	Enrollment	Application Period	Acceptance confirmation from Academic Supervisor prior to Application (*2)
Undergraduate Course		Bachelor degree	4 years	April	January	—
Graduate Course	Master Course	Regular course	2 years	April	July	Required
		International Graduate Program for Global Engineers (IGPGE) (This is a course for who aims at working in Japanese companies after completing the course.)	2 years	October	January	Required
	Doctoral Course	Doctoral degree	3 years	April	Regular Application: July Winter Application: January	Required
Research Student Program		This program is not for the purpose of obtaining a degree	Up to 2 years	April ----- October	Students living in Japan: January Students living abroad: December ----- Students living in Japan: August Students living abroad: June	Required
Student Exchange program	Special Undergraduate Student (SUS)	This program is for the undergraduate students in overseas universities who wish to take lectures at NITech for one or two semesters. (one semester completes in half year.)	Up to 1 year	April	December	—
				October	June	
	Special Graduate Student (SGS)	This program is for the graduate students in overseas universities who wish to take lectures at NITech for one or two semesters. (one semester completes in half year.)		April	December	—
October			June			
Special Graduate Research Student (SGRS)	This program is for the graduate students in overseas universities who wish to conduct research at NITech for one or two semesters. (one semester completes in half year.)	April or October (Enrollment in other than the above months is subject to discussion)	By 4 months prior to the research starting date	Required		

(*1) There is no program provided for the sole purpose of studying Japanese Language.

(*2) If it is "Required", you should contact a prospective academic supervisor (professors) to obtain an acceptance confirmation in his/her laboratory in advance of submitting application

■ SCHOLARSHIP

Application periods, qualifications, and requirements differ according to the granting organization, so please refer to the following website. When applying for a scholarship, please wait until you receive the results of your application before applying for another one. There are Japanese Government (MEXT) scholarships, Monbukagakusho Honors Scholarships for Privately-Financed International Students (Gakushu Shoreihi) by JASSO (Japan Student Services Organization) and more than 30 -40 scholarships by private foundations every year.

For more information, please see the following website.
<https://www.nitech.ac.jp/campus/support/international/index.html>

Office international@adm.nitech.ac.jp

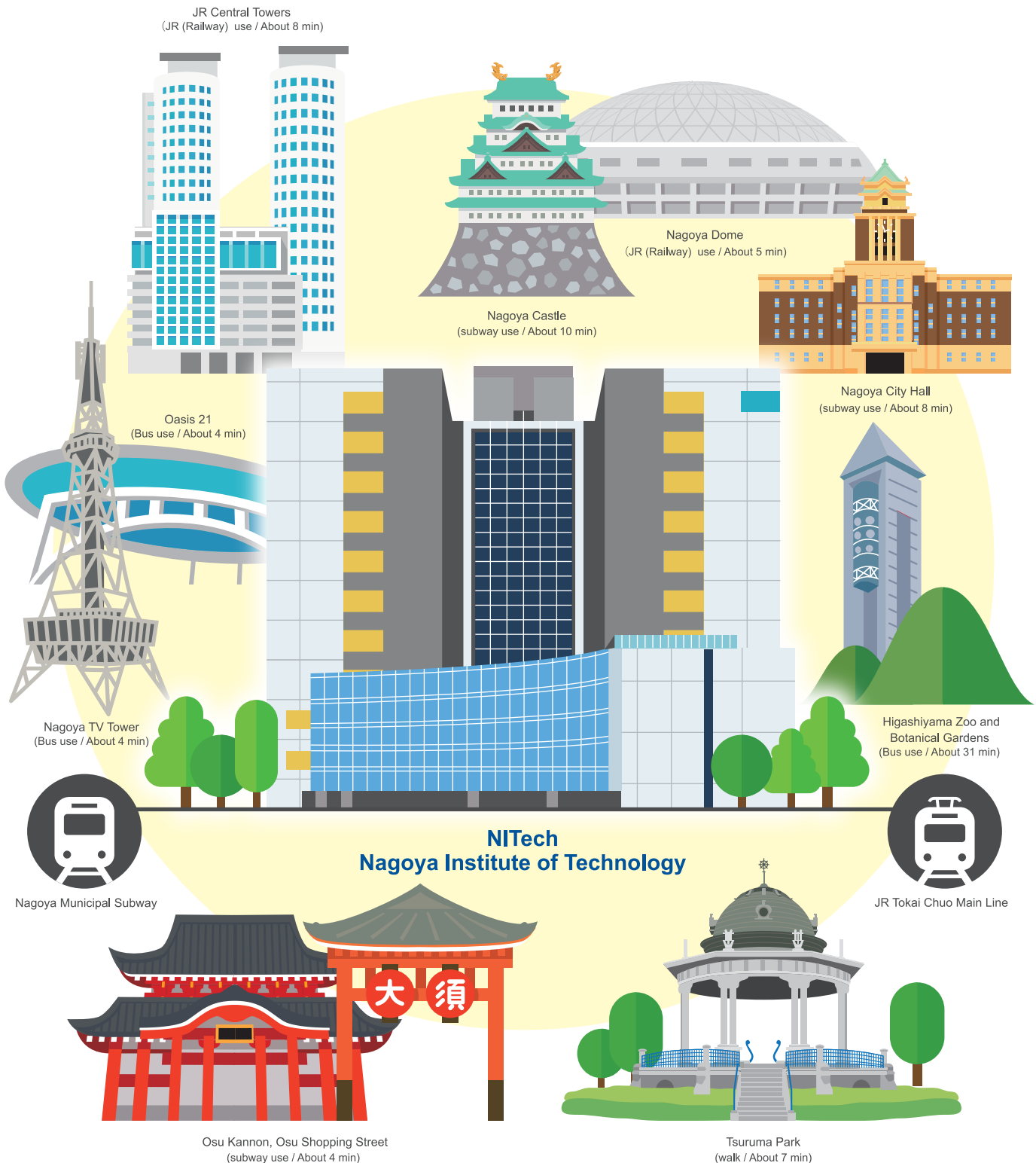
Language used in Lectures	Application Requirements	Entrance Examination			
	(Note: This is the excerpt of most important Application Requirements. For further details, check NITech official web-site) When	When	Selection Process	Language in the Examination	Result Notification
Japanese	You should: <ul style="list-style-type: none"> • have completed at least 12 years of school education • hold total 200 or higher score on EJU's Japanese as a Foreign Language Test in the section of "Reading comprehension", "listening comprehension" and "listening & reading comprehension" • hold TOEIC L&R or TOEFL score • hold total 200 or higher score on EJU's Math (Course 2) and Science. Concerning Science, you should select 2 subjects which are designated by the Department you apply for. 	February	Document screening, Oral Exam, Interview	Japanese	February
Japanese (some in English)	You should: <ul style="list-style-type: none"> • have completed at least 16 years of school education • hold TOEIC L&R or TOEFL score 	August	Document screening, Interview, Writing Exam	Japanese (In Writing Exam, the questions are written in Japanese, but you can answer either in Japanese or in English)	September
English or Japanese (In case the lectures are given in Japanese, students will receive supplementary explanation in English.)	You should: <ul style="list-style-type: none"> • have intention to obtain employments in Japanese companies after completing the program. • have completed at least 16 years of school education • have Grade Point Averages (GPA)* 2.3 or higher during the past 2 years <p>* GPA will be calculated using the 3.0 grading scale.</p>	February	Document screening, Oral Exam, Interview (including an Internet-based interview)	English	March
Japanese or English	You should hold master degree, or academic degree equivalent to that.	August ----- February	Document screening, Oral Exam, Interview	You can take either in Japanese or in English	September ----- February
— (Research only)	You should: <ul style="list-style-type: none"> • have completed at least 16 years of school education • hold bachelor or master degree, or academic degree equivalent to those. • be fluent in Japanese, the level equivalent to JLPT N2 	You should submit the application documents to NITech International student Affairs Office and make the payment of application fee. Your acceptance is determined by our Educational Affairs Committee based on the application documents submitted.			
Japanese	You should be an undergraduate student in overseas universities. For applying for this program, no specific test score of Japanese is required, however, as all the lectures are given in Japanese, the applicants must be quite fluent in Japanese.	You should submit the application documents to NITech International Student Affairs Office. The documents should be submitted through International Affairs Division in your home University. Your acceptance is determined by our Educational Affairs Committee based on the application documents submitted.			
Japanese	You should be a graduate student in overseas universities. For applying for this program, no specific test score of Japanese is required, however, as all the lectures are given in Japanese, the applicants must be quite fluent in Japanese.				
— (Research only)	You should be a graduate student in overseas universities.				

documents. You can check their research field and contact address in Researcher Database System of our web-site "<http://researcher.nitech.ac.jp/search?l=en>".

Center of Nagoya

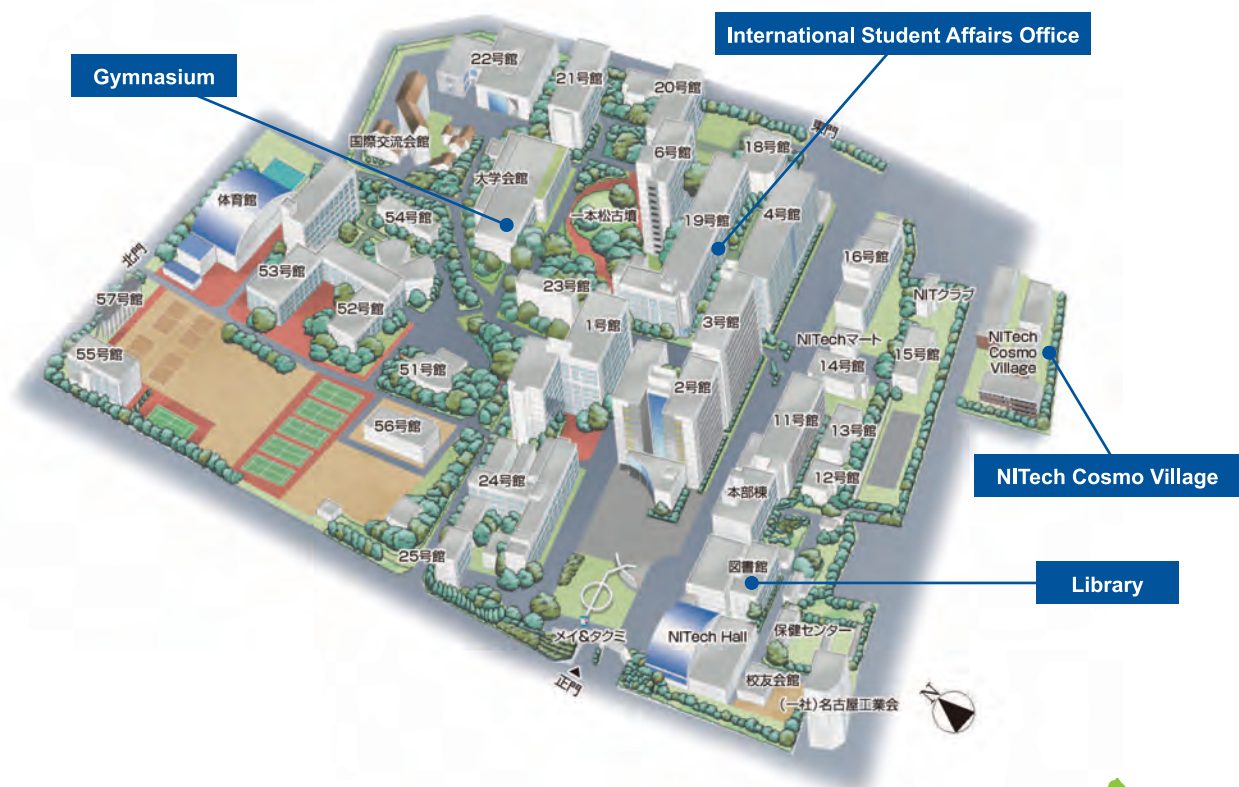
NAGOYA, located in the central Japan, is the 3rd -largest metropolitan area following Tokyo and Osaka.

The main campus of NITech is located in the heart of NAGOYA. It is next to Tsuruma Park and has easy access to the central shopping area, offering students a convenient and relaxing campus life.



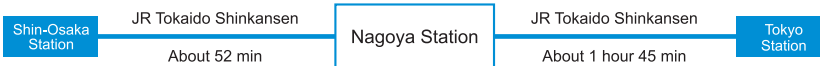
Estimated time is for taking public transportation and it does not include time for walking. (Since Tsuruma Park is just across the street, estimated time is on foot.)
Estimated time might be varied depending on traffic conditions.

CAMPUS MAP



ACCESS TO NAGOYA

■ By Bullet Train



TIME FROM THE NEAREST STATION TO NAGOYA STATION & CENTRAIR

